



ซีเมนส์ แคบิ์ตตาล็อก

เซอร์กิตเบรกเกอร์รุ่น 3WT

Catalog
Thailand
version

Edition
2024

SIEMENS

Related catalogs

Low-Voltage Power Distribution and Electrical Installation Technology LV 10

SENTRON • SIVACON • ALPHA
Protection, Switching, Measuring and Monitoring
Devices, Switchboards and Distribution Systems

PDF (E86060-K8280-A101-A8-7600)
Print (E86060-K8280-A101-A6-7600)



Air Circuit Breakers and Molded Case Circuit Breakers with UL Certification LV 18

PDF (E86060-K8280-E347-A1-7600)



Industrial Controls IC 10

PDF (E86060-K1010-A101-A9-7600)



Industrial Communication IK PI

E86060-K6710-A101-B8-7600



DELTA ET D1

Switches and Socket Outlets

PDF



SITRAIN

Training for Industry

www.siemens.com/sitrain



Catalog PDF / Contact

Catalog PDF

Digital versions of the catalogs are available in the Siemens Industry Online Support.

www.siemens.com/lowvoltage/catalogs



Contact

Your personal contact can be found in our Contacts Database at:

www.siemens.com/automation-contact



Industry Mall / TIA ST / CA 01

Industry Mall

Information and Ordering Platform on the Internet:

www.siemens.com/industrymall



Siemens TIA Selection Tool

for the selection, configuration and ordering of TIA products and devices

www.siemens.com/tst



Products for Automation and Drives CA 01

Interactive Catalog
Download

www.siemens.com/ca01/download

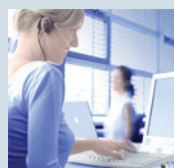


Trademarks

All product designations may be registered trademarks or product names of Siemens AG or other supplying companies. Third parties using these trademarks or product names for their own purposes may infringe upon the rights of the trademark owners. Further information about low-voltage power distribution and electrical installation technology is available on the Internet at:

www.siemens.com/lowvoltage

Technical Support



Expert advice on technical questions with a wide range of demand-optimized services for all our products and systems.

www.siemens.com/lowvoltage/support-request

Air Circuit Breakers

สารบัญ

SENTRON



3WT	ข้อมูลผลิตภัณฑ์	6
	ราคาผลิตภัณฑ์	12
	Accessories	14

3WT Air Circuit Breakers up to 4000 A

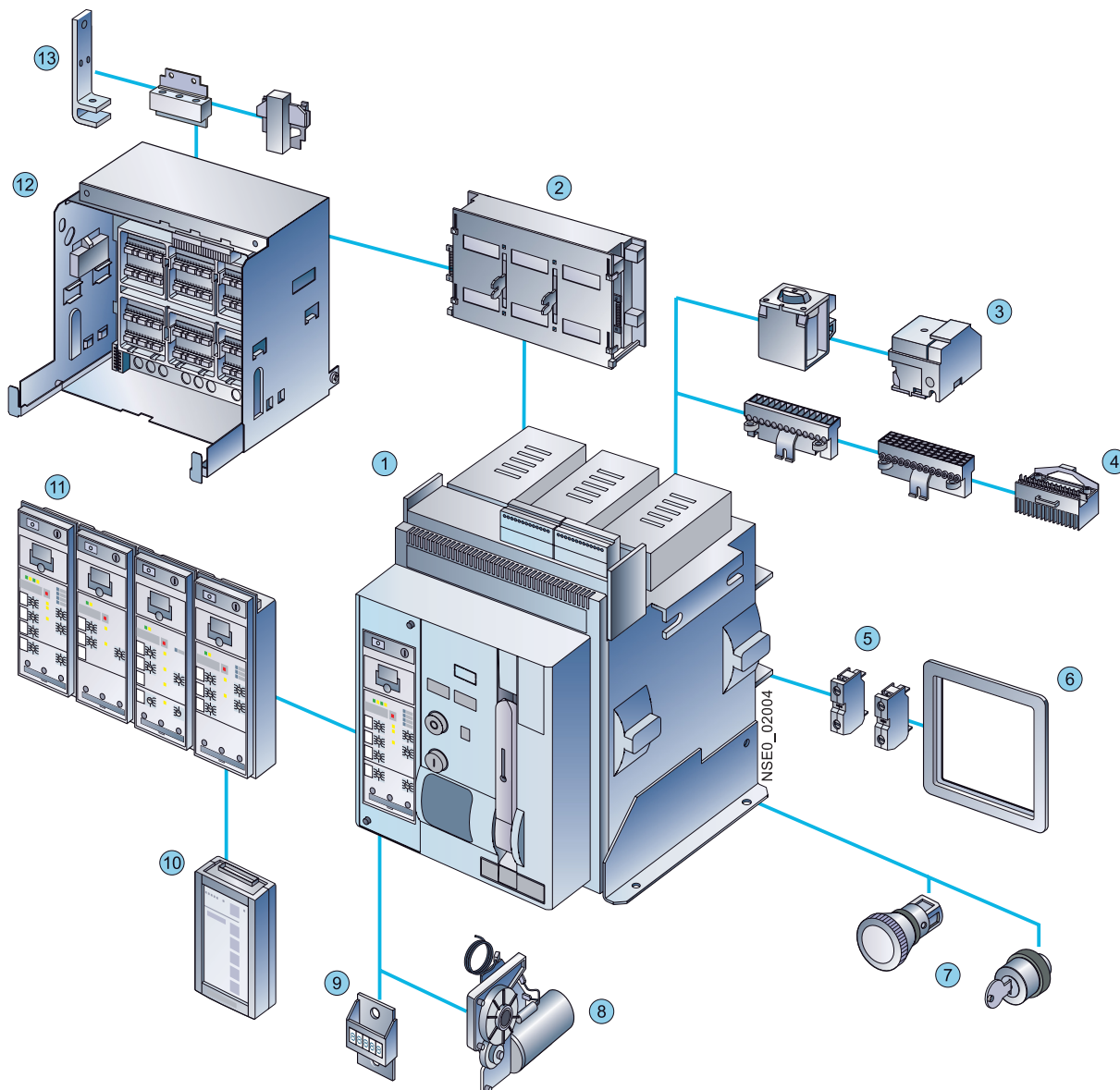
Note



SENTRON

3WT Air Circuit Breakers

Overview



- ① Air circuit breaker
- ② Shutter
- ③ Closing solenoid, auxiliary trip unit
- ④ Auxiliary conductor plug-in system
- ⑤ Auxiliary switch block
- ⑥ Door sealing frame
- ⑦ EMERGENCY-STOP pushbutton, key-operated
- ⑧ Motorized operating mechanism
- ⑨ Operating cycles counter
- ⑩ Manual tester for electronic trip unit (ETU)
- ⑪ Microprocessor based electronic trip unit (ETU)
- ⑫ Guide frame
- ⑬ Main connection, front, horizontal, vertical

Highlights at a glance

Flexibility

- New electronic trip units (ETUs) with outstanding features
- Only two frame sizes cover a broad range of applications up to 66 kA at 500 V, 3- or 4-pole version, fixed-mounted or withdrawable design

Ease of use

- User-friendliness in planning, configuration, installation and operation
- Wide range of same accessories for both frame sizes can be easily retrofitted
- Displays for all electronic trip units (ETUs)

Safety and reliability

- Global and standardized processes ensure highest product quality
- Conforms to international standards and approvals

ภาพรวมผลิตภัณฑ์

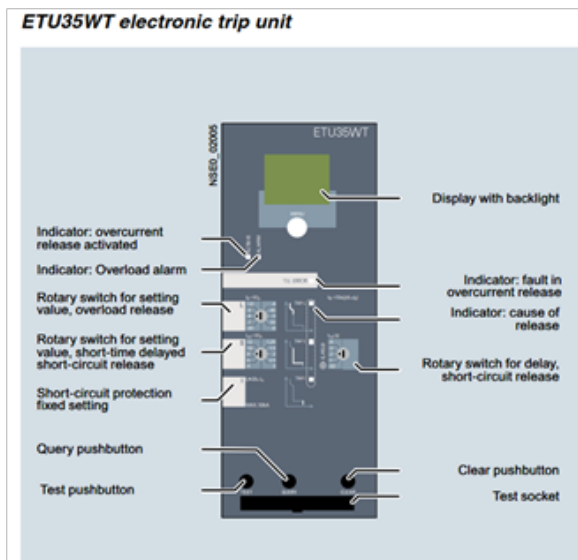


3WT Air Circuit Breakers

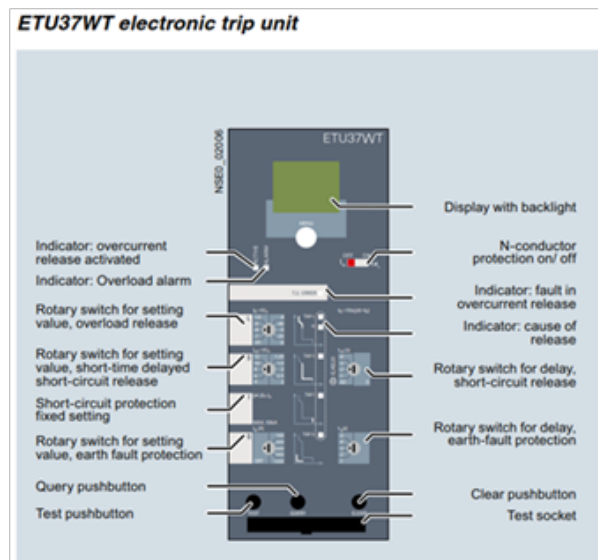
Flexibility and reliability up to 66kV 4000A

เซอร์กิตเบรกเกอร์รุ่น 3WT เป็นผลิตภัณฑ์จากซีเมนส์ที่ออกแบบมาให้มีฟังก์ชันการใช้งานที่ง่ายดาย มีประสิทธิภาพสูง โดยมาพร้อมกับหน้าจอแสดงผลแบบ LCD Display และมีไฟแบบ LED สำหรับแสดงสถานะการทำงานของเบรกเกอร์ รวมถึงสามารถติดตั้งอุปกรณ์เสริมต่างๆ เพิ่มเติมได้ เพื่อเพิ่มความปลอดภัยแก่ผู้ใช้งานและเพิ่มเสถียรภาพในระบบไฟฟ้า นอกจากนี้ 3WT ยังเป็นเบรกเกอร์ที่มีคุณภาพสูง เหมาะกับการใช้งานได้หลากหลายประเภท ครอบคลุมผู้ใช้งานหลายกลุ่ม ทั้งโรงงาน อาคารสำนักงาน รวมถึงที่พักอาศัย โดยสามารถรองรับการใช้งาน ตั้งแต่ 400A จนถึง 4000A ด้วยค่า breaking capacity (Icu) ที่สูงถึง 66kA ที่ 690V โดยมีทั้งแบบ 3 โพล และ 4 โพล Fixed-mounted version และ Withdrawable version

Electric Trip Unit แสดงผลด้วยจอ LCD Display และใช้ไฟแบบ LED สำหรับแสดงสถานะการทำงาน



ETU35WT ฟังก์ชัน LSI



ETU37WT ฟังก์ชัน LSING

3WT Air Circuit Breakers up to 4000 A

ข้อมูลผลิตภัณฑ์

General Data

Technical Specifications



Protection functions
Parameterization by

ETU35WT
D

ETU37WT
D & S

ETU45WT/ETU47WT
D & S

Functional overview of the electronic trip unit system

<p>Diagram showing protection functions L, N, S, I. L: Overload protection, N: Neutral conductor protection, S: Short-time delayed short-circuit protection, I: Instantaneous short-circuit protection. Parameters include I_R, t_R, I_{sd}, t_{sd}, I_i.</p>	L	Overload protection Function can be switched on/off Setting range $I_R = I_n \times \dots$ Setting range for time-lag class t_R at I^2t Thermal image can be switched on/off Phase failure sensitivity	-- 0.4-0.45-0.5-0.55-0.6-0.65-0.7-0.8-0.9-1 10 s fixed -- at $t_{sd} = 20$ ms (M)	-- 0.4-0.45-0.5-0.55-0.6-0.65-0.7-0.8-0.9-1 10 s fixed -- at $t_{sd} = 20$ ms (M)	-- 0.4-0.45-0.5-0.55-0.6-0.65-0.7-0.8-0.9-1 2-3-5-5.5-8-10-14-17-21-25-30 s -- at $t_{sd} = 20$ ms (M)
	N	Neutral conductor protection Function can be switched on/off N conductor setting range $I_N = I_n \times \dots$	-- --	-- 1	-- 0.5-1
	S	Short-time delayed short-circuit protection Function can be switched on/off Setting range $I_{sd} = I_n \times \dots$ Setting range for delay time t_{sd}	-- 1.25-1.5-2-2.5-3-4-6-8-10-12 0-M-100-200-300-400 ms	-- 1.25-1.5-2-2.5-3-4-6-8-10-12 0-M-100-200-300-400 ms	-- 1.25-1.5-2-2.5-3-4-6-8-10-12 M-100-200-300-400 ms
	I	Instantaneous short-circuit protection Function can be switched on/off Setting range $I_i = I_n \times \dots$	-- fixed for $I_i \geq 20 \geq I_n$, max. 50 kA	-- fixed for $I_i \geq 20 \geq I_n$, max. 50 kA	-- 1.5-2.2-3-4-6-8-10-12-0.8 x I_{cs}
	G	Ground-fault protection Tripping function can be switched on/off Detection of the ground-fault current through summation current formation with internal or external neutral conductor transformer Detection of ground-fault current through external transformer Setting range of the operating current I_g for release Setting range of the delay time t_g Switchable ground-fault protection characteristic curve (I^2t -dependent function) Setting range for delay time t_g at I^2t	-- -- -- -- -- -- --	-- 3 -- 100-200-300-400-500 ms -- -- --	-- 3 (only ETU47WT) 3 (only ETU47WT) 3 (only ETU47WT) OFF-100-300-600-900-1200 (only ETU47WT) 100-200-300-400-500 ms (only ETU47WT) 100-200-300-400-500 ms (only ETU47WT) 100-200-300-400-500 ms (only ETU47WT)
	LCD	LCD, with backlight	--	--	--
	Watchdog	Watchdog	--	--	--
	Communication	Modbus RTU with COM16WT	--	--	--
	Metering	Metering with internal voltage tap	--	--	--
	LED display	Electronic trip unit active Alarm ETU fault L-release S-release I-release N-release G-release	-- -- -- -- -- -- -- --	-- -- -- -- -- -- -- --	-- -- -- -- -- -- -- --

Delay time figures given in ms.

M = Motor protection, corresponds to 20 ms.

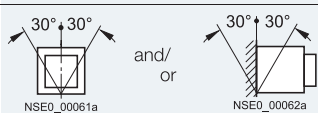
D = Rotary coding switch.

D & S = Rotary coding and slide switch.

✓ Available.

-- Not available.

Technical specifications

Size			I						
Type			3WT804	3WT806	3WT808	3WT810	3WT812	3WT816	
Rated current I_n at 50 °C, at 50/60 Hz	Main conductor	A	400	630	800	1000	1250	1600	
	Neutral conductor (only on 4-pole version)	A	400	630	800	1000	1250	1600	
Rated operating voltage U_e at 50/60 Hz		AC V	up to 690						
Rated impulse withstand voltage U_{imp}	Main circuits ¹⁾	kV	12						
	Auxiliary circuits	kV	4						
Utilization category			B						
Rated short-circuit making capacity I_{cm} (peak value)	Breaking capacity	up to							
	N	500 V AC	kA	121					
	S	500 V AC	kA	145					
		690 V AC	kA	105					
Rated service short-circuit breaking capacity I_{cs} (rms value)	Breaking capacity	up to							
	N	500 V AC	kA	55					
	S	500 V AC	kA	66					
	Z-Opt. A04	690 V AC	kA	50					
Rated ultimate short-circuit breaking capacity I_{cu} (rms value)	Breaking capacity	up to							
	N	500 V AC	kA	55					
	S	500 V AC	kA	66					
	Z-Opt. A04	690 V AC	kA	50					
Permissible ambient temperatures	Operation	°C	−20 ... +70						
	Storage	°C	−40 ... +80						
Rated short-time withstand current I_{cw} at 50/60 Hz. At a rated voltage of 690 V, the I_{cw} value of the circuit breaker cannot be greater than the I_{cu} or I_{cs} value at 690 V.	0,5 s	kA	50						
	1 s	kA	35 ²⁾ /50						
Permissible load for fixed-mounted and withdrawable circuit breakers at cabinet interior temperature ³⁾⁴⁾	up to 50 °C	A	400	630	800	1000	1250	1600	
Rated rotor operating voltage U_{er}		V	2000						
Power loss at I_n with 3-phase symmetr. load (without line- side busbars and metal components ⁴⁾)	Fixed-mounted circuit breake	W	25	40	60	90	120	140	
	Withdrawable circuit breaker including guide frame	W	50	80	130	205	255	310	
Endurance with maintenance ⁵⁾	mechanical	Operating cycles	18000 12000						
	electrical up to 690 V AC ⁶⁾								
Operating frequency	mechanical	1/h	60						
	electrical	1/h	60						
Minimum interval between tripping operation by electronic trip unit and next making operation of the circuit breaker (only with automatic mechanical resetting of the lock- out device)		ms	80						
Service position									
Degree of protection			Circuit breaker IP20, when fitted in cabinet or frame Operator panel with door sealing frame IP41						
Main conductor minimum cross-sections	Copper bars, bare	Qty, mm ²	1 × 50 × 10	1 × 50 × 10	1 × 60 × 10	2 × 40 × 10	2 × 60 × 10	2 × 60 × 10	
	Copper bars, painted black	Qty, mm ²	1 × 40 × 10	1 × 40 × 10	1 × 50 × 10	1 × 60 × 10	2 × 40 × 10	2 × 50 × 10	
Auxiliary conductors (Cu) Max. no. of aux. conductors × cross-section			1 × 0.5 ... 2,5 mm ² ; 1 × AWG 14 2 × 1.0 mm ²						
Weights									
3-pole circuit breakers									
• Fixed-mounted circuit breaker	approx. kg	34	34	34	34	34	36		
• Withdrawable circuit breaker	approx. kg	36	36	36	36	36	38		
• Guide frame	approx. kg	22	22	22	22	22	23		
4-pole circuit breakers									
• Fixed-mounted circuit breaker	approx. kg	47	47	47	47	47	49		
• Withdrawable circuit breaker	approx. kg	49	49	49	49	49	51		
• Guide frame	approx. kg	27	27	27	27	27	28		

1) Rated insulation voltage $U_i = 1000$ V AC.

2) Breaking capacity N.

3) The temperatures apply to the air surrounding the upper third of the circuit breaker.

4) These values apply in the case of sinusoidal current (50/60 Hz). The heating/losses increase in the event of harmonics and higher frequencies.

5) Maintenance: replacement of the contact set and arc chute.

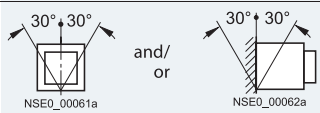
6) Per contact set. Disconnect. of the rated current I_n and power factor = 0.8.

3WT Air Circuit Breakers up to 4000 A

ข้อมูลผลิตภัณฑ์

General Data

Technical specifications

Size			II				
Type			3WT806	3WT808	3WT810	3WT812	3WT816
Rated current I_n at 50 °C, at 50/60 Hz ¹⁾	Main conductor	A	630	800	1000	1250	1600
	Neutral conductor (only on 4-pole version)	A	630	800	1000	1250	1600
Rated operating voltage U_e at 50/60 Hz	AC V		up to 690				
Rated impulse withstand voltage U_{imp}	Main circuits ²⁾	kV	12				
	Auxiliary circuits	kV	4				
Utilization category			B				
Rated short-circuit making capacity I_{cm} (peak value)	Breaking capacity up to						
	N	500 V AC	kA	--			
	S	500 V AC	kA	145			
		690 V AC	kA	105			
Rated service short-circuit breaking capacity I_{cs} (rms value)	Breaking capacity up to						
	N	500 V AC	kA	--			
	S	500 V AC	kA	66			
	Z-Opt. A04 / A08	690 V AC	kA	50/66			
Rated ultimate short-circuit breaking capacity I_{cu} (rms value)	Breaking capacity						
	N	500 V AC	kA	--			
	S	500 V AC	kA	66			
	Z-Opt. A04 / A08	690 V AC	kA	50/66			
Permissible ambient temperatures	Operation	°C	-20 ... +70				
	Storage	°C	-40 ... +80				
Rated short-time withstand current I_{cw} at 50/60 Hz. At a rated voltage of 690 V, the I_{cw} value of the circuit breaker cannot be greater than the I_{cu} or I_{cs} value at 690 V.	0.5 s		66				
	1 s	kA	66				
Permissible load for fixed-mounted and withdrawable circuit breakers at cabinet interior temperature ³⁾⁴⁾	up to 50 °C ¹⁾	A	630	800	1000	1250	1600
Rated rotor operating voltage U_{er}	V		2000				
Power loss at I_n with 3-phase symmetr. load (without line- side busbars and metal components ⁴⁾)	Fixed-mounted circuit breaker	W	20	30	45	70	110
	Withdrawable circuit breaker including guide frame	W	40	60	90	140	225
Endurance with maintenance ⁵⁾	mechanical		12000				
	electrical up to 690 V AC ⁶⁾	Oper. cycles	12000				
Operating frequency	mechanical	1/h	60				
	electrical up to 690 V AC ⁶⁾	1/h	20				
Minimum interval between tripping operation by electro nic trip unit and next making opera- tion of the circuit breaker (only with automatic mechanical resetting of the lockout device)	ms		80				
Service position							
Degree of protection	Circuit breaker IP20, when fitted in cabinet or frame Operator panel with door sealing frame IP41						
Main conductor minimum cross-sections	Copper bars, bare	Qty. mm ²	1 × 50 × 10	1 × 60 × 10	2 × 40 × 10	2 × 60 × 10	2 × 60 × 10
	Copper bars, painted black	Qty. mm ²	1 × 40 × 10	1 × 50 × 10	1 × 60 × 10	2 × 40 × 10	2 × 50 × 10
Auxiliary conductors (Cu) Max. no. of aux. conductors × cross-section	solid and finely stranded with end sleeves	1 × 0.5 ... 2,5 mm ² ; 1 × AWG 14 2 × 1.0 mm ²					
Weights							
3-pole circuit breakers							
• Fixed-mounted circuit breaker	approx. kg	57					
• Withdrawable circuit breaker	approx. kg	59					
• Guide frame	approx. kg	35					
4-pole circuit breakers							
• Fixed-mounted circuit breaker	approx. kg	70					
• Withdrawable circuit breaker	approx. kg	72					
• Guide frame	approx. kg	46					

¹⁾ At 3WT840: 40 °C.

²⁾ Rated insulation voltage U_i = 1000 V AC.

³⁾ The temperatures apply to the air surrounding the upper third of the circuit breaker.

⁴⁾ These values apply in the case of sinusoidal current (50/60 Hz). The heating/losses increase in the event of harmonics and higher frequencies.

⁵⁾ Maintenance (see Operating Manual)

⁶⁾ Per contact set. Disconnect. of the rated current I_n and power factor = 0.9

1) At 3WT840: 40 °C.

2) Rated insulation voltage $U_i = 1000$ V AC.

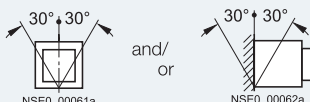
3) The temperatures apply to the air surrounding the upper third of the circuit breaker.

4) These values apply in the case of sinusoidal current (50/60 Hz). The heating/losses increase in the event of harmonics and higher frequencies.

5) Maintenance (see Operating Manual)

6) Per contact set. Disconnect. of the rated current I_n and power factor = 0.8.

Technical specifications

Size			II				
Type			3WT820	3WT825	3WT832	3WT840	
Rated current I_n at 50 °C, at 50/60 Hz ¹⁾	Main conductor	A	2000	2500	3200	3800 (withdrawable)	4000 (fixed-mounted)
	Neutral conductor (only on 4-pole version)	A	2000	2500	3200	3800 (withdrawable)	4000 (fixed-mounted)
Rated operating voltage U_e at 50/60 Hz		AC V	up to 690				
Rated impulse withstand voltage U_{imp}	Main circuits ²⁾	kV	12				
	Auxiliary circuits	kV	4				
Utilization category			B				
Rated short-circuit making capacity I_{cm} (peak value)	Breaking capacity up to						
	N	500 V AC	kA	--			
	S	500 V AC	kA	145			
	Z-Opt. A04 / A08	690 V AC	kA	105/145			
Rated service short-circuit breaking capacity I_{cs} (rms value)	Breaking capacity up to						
	N	500 V AC	kA	--			
	S	500 V AC	kA	66			
	Z-Opt. A04 / A08	690 V AC	kA	50/66	50/66	50	--
Rated ultimate short-circuit breaking capacity I_{cu} (rms value)	Breaking capacity						
	N	500 V AC	kA	--			
	S	500 V AC	kA	66			
	Z-Opt. A04 / A08	690 V AC	kA	50/66	50/66	50	--
Permissible ambient temperatures	Operation	°C	–20 ... +70				
	Storage	°C	–40 ... +80				
Rated short-time withstand current I_{cw} at 50/60 Hz. At a rated voltage of 690 V, the I_{cw} value of the circuit breaker cannot be greater than the I_{cu} or I_{cs} value at 690 V.	0.5 s		66				
	1 s	kA	66				
Permissible load for fixed-mounted and withdrawable circuit breakers at cabinet interior temperature ³⁾⁴⁾	up to 50 °C ¹⁾	A	2000	2500	3200	3800 ⁵⁾	4000 ⁶⁾
Rated rotor operating voltage U_{er}		V	2000				
Power loss at I_n with 3-phase symmetr. load (without line- side busbars and metal components ⁴⁾)	Fixed-mounted circuit breaker	W	170	325	420	--	902
	Withdrawable circuit breaker including guide frame	W	310	535	760	1050	--
Endurance with maintenance ⁷⁾	mechanical	Oper. cycles	12000				
	electrical up to 690 V AC ⁸⁾		12000		10000	4000 ¹⁰⁾	4000 ¹⁰⁾
Operating frequency	mechanical	1/h	60				
	electrical up to 690 V AC ⁸⁾	1/h	20	20	10	60	60
Minimum interval between tripping operation by electronic trip unit and next making operation of the circuit breaker (only with automatic mechanical resetting of the lockout device)		ms	80				
Service position							
Degree of protection			Circuit breaker IP20, when fitted in cabinet or frame Operator panel with door sealing frame IP41				
Main conductor minimum cross-sections	Copper bars, bare	Qty. mm ²	2 × 100 × 10	3 × 100 × 10	3 × 100 × 10	4 × 120 × 10	4 × 120 × 10
	Copper bars, painted black	Qty. mm ²	2 × 80 × 10	2 × 100 × 10	3 × 100 × 10	4 × 100 × 10	4 × 100 × 10
Auxiliary conductors (Cu) Max. no. of aux. conductors × cross-section		solid and finely stranded with end sleeves	1 × 0.5 ... 2,5 mm ² ; 1 × AWG 14 2 × 1.0 mm ²				
Weights							
3-pole circuit breakers							
• Fixed-mounted circuit breaker		approx. kg	57	57	61	--	92 ⁹⁾
• Withdrawable circuit breaker		approx. kg	59	59	63	64	--
• Guide frame		approx. kg	35	35	37	54 ⁹⁾	--
4-pole circuit breakers							
• Fixed-mounted circuit breaker		approx. kg	70	70	74	--	106 ⁹⁾
• Withdrawable circuit breaker		approx. kg	72	72	76	77	--
• Guide frame		approx. kg	46	46	48	64 ⁹⁾	--

1) At 3WT840: 40 °C.

2) Rated insulation voltage U_i = 1000 V AC.

3) The temperatures apply to the air surrounding the upper third of the circuit breaker.

4) These values apply in the case of sinusoidal current (50/60 Hz). The heating/losses increase in the event of harmonics and higher frequencies.

5) Withdrawable circuit breakers.

6) Fixed-mounted circuit breakers.

7) Maintenance: replacement of the contact set and arc chute.

8) Per contact set. Disconnect. of the rated current I_n and power factor = 0.8.

9) Including vertical busbars.

10) At 3WT840 applicable up to 500V AC only.

3WT Air Circuit Breakers up to 4000 A

ราคาผลิตภัณฑ์

Price List

ข้อมูลของผลิตภัณฑ์และการสั่งซื้อสินค้า

Option	
Electronic Trip Unit / ETU	ETU35WT: protection function LSI with LCD display
Following accessories are included	Manual operated mechanism, with mechanical closing Ready to closed indicator with signaling switch With auxiliary switch 2 NO + 2 NC, with shutter tripped signaling trip (1NO)

Size	Rated Current I_n	Breaking capacity $I_{cu} = I_{cs}$	short-time withstand current $I_{cw} / 1s, 500V$	Fixed mounted version 3-pole		Withdrawable version 3-pole	
	A	kA	kA	รุ่นสินค้า	ราคา (บาท)	รุ่นสินค้า	ราคา (บาท)

ETU35WT							
Horizontal main circuit connection							
I	630 800 1000 1250 1600	55	50kA*	3WT80 60-5AA00-0AA2 3WT80 80-5AA00-0AA2 3WT81 00-5AA00-0AA2 3WT81 20-5AA00-0AA2 3WT81 60-5AA00-0AA2	99,130 102,230 104,920 109,150 123,400	3WT80 60-5AA04-5AA2 3WT80 80-5AA04-5AA2 3WT81 00-5AA04-5AA2 3WT81 20-5AA04-5AA2 3WT81 60-5AA04-5AA2	120,020 123,690 126,130 131,050 148,190
Horizontal main circuit connection							
I	630 800 1000 1250 1600	66	50kA	3WT80 61-5AA00-0AA2 3WT80 81-5AA00-0AA2 3WT81 01-5AA00-0AA2 3WT81 21-5AA00-0AA2 3WT81 61-5AA00-0AA2	106,140 109,410 112,390 116,880 132,130	3WT80 61-5AA04-5AA2 3WT80 81-5AA04-5AA2 3WT81 01-5AA04-5AA2 3WT81 21-5AA04-5AA2 3WT81 61-5AA04-5AA2	133,350 137,430 140,150 145,590 164,650
II	2000 2500 3200	66	66	3WT82 02-5AA00-0AA2 3WT82 52-5AA00-0AA2 3WT83 22-5AA00-0AA2	151,040 197,300 243,560	3WT82 02-5AA04-5AA2 3WT82 52-5AA04-5AA2 3WT83 22-5AA04-5AA2	189,130 246,290 302,080
Vertical main circuit connection							
II	4000	66	66	3WT84 02-5AA01-0AA2	394,200	3WT84 02-5AA05-5AA2	493,060
Operating mechanism, auxiliary release,auxiliary switch (ตำแหน่งที่ 9 - 11)				ราคาเพิ่มเติม (บาท)		ราคาเพิ่มเติม (บาท)	
Manual operating mechanism, with mechanical closing, without 1st and 2nd auxiliary releases, with auxiliary switch 2 NO + 2 NC				A A 0	0	A A 0	0
Motor operated mechanism, with mechanical and electrical closing, motor and closing solenoid 220-240 V AC 50/60 Hz, 220-250 V DC, Shunt release “F” 220-240 V AC 50/60 Hz, 220-250 V DC without 2nd auxiliary release, with auxiliary switch 2 NO + 2 NC				U A 3	61,110	U A 3	61,110
Under-voltage release (ตำแหน่งที่ 10)							
Under voltage Release instantaneous							
V AC 50/60 Hz		V DC					
208-240 380-415		220-250 -		N P	8,340 8,340	N P	8,340 8,340
Under voltage Release with time delay							
V AC 50/60 Hz		V DC					
208-240 380-415		220-250 -		V W	11,940 11,940	V W	11,940 11,940

* $I_{cw}/500V$ 0.5 s for breaking capacity N

ข้อมูลของผลิตภัณฑ์และการสั่งซื้อสินค้า

Option	
Electronic Trip Unit / ETU	ETU37WT: protection function LSING with LCD display
Following accessories are included	Manual operated mechanism, with mechanical closing Ready to closed indicator with signaling switch With auxiliary switch 2 NO + 2 NC, with shutter tripped signaling trip (1NO)

Size	Rated Current I_n	Breaking capacity $I_{cu} = I_{cs}$	short-time withstand current I_{cw} 1s, 500V	Fixed mounted version 3-pole		Withdrawable version 3-pole	
	A	kA	kA	รุ่นสินค้า	ราคา (บาท)	รุ่นสินค้า	ราคา (บาท)

ETU37WT							
Horizontal main circuit connection							
I	630 800 1000 1250 1600	55	50kA*	3WT80 60-6AA00-0AA2 3WT80 80-6AA00-0AA2 3WT81 00-6AA00-0AA2 3WT81 20-6AA00-0AA2 3WT81 60-6AA00-0AA2	145,130 148,230 150,920 155,150 169,400	3WT80 60-6AA04-5AA2 3WT80 80-6AA04-5AA2 3WT81 00-6AA04-5AA2 3WT81 20-6AA04-5AA2 3WT81 60-6AA04-5AA2	166,020 169,690 172,130 177,050 194,190
Horizontal main circuit connection							
I	630 800 1000 1250 1600	66	50kA	3WT80 61-6AA00-0AA2 3WT80 81-6AA00-0AA2 3WT81 01-6AA00-0AA2 3WT81 21-6AA00-0AA2 3WT81 61-6AA00-0AA2	152,140 155,410 158,390 162,880 178,130	3WT80 61-6AA04-5AA2 3WT80 81-6AA04-5AA2 3WT81 01-6AA04-5AA2 3WT81 21-6AA04-5AA2 3WT81 61-6AA04-5AA2	179,350 183,430 186,150 191,590 210,650
II	2000 2500 3200	66	66	3WT82 02-6AA00-0AA2 3WT82 52-6AA00-0AA2 3WT83 22-6AA00-0AA2	197,040 243,300 289,560	3WT82 02-6AA04-5AA2 3WT82 52-6AA04-5AA2 3WT83 22-6AA04-5AA2	235,130 292,290 348,080
Vertical main circuit connection							
II	4000	66	66	3WT84 02-6AA01-0AA2	440,200	3WT84 02-6AA05-5AA2	539,060
Operating mechanism, auxiliary release, auxiliary switch (ตำแหน่งที่ 9 - 11)				ราคาเพิ่มเติม (บาท)		ราคาเพิ่มเติม (บาท)	
Manual operating mechanism, with mechanical closing, without 1st and 2nd auxiliary releases, with auxiliary switch 2 NO + 2 NC				AAO	0	AAO	0
Motor operated mechanism, with mechanical and electrical closing, motor and closing solenoid 220-240 V AC 50/60 Hz, 220-250 V DC, Shunt release “F” 220-240 V AC 50/60 Hz, 220-250 V DC without 2nd auxiliary release, with auxiliary switch 2 NO + 2 NC				UA3	61,110	UA3	61,110
Under-voltage release (ตำแหน่งที่ 10)							
Under voltage Release instantaneous							
V AC 50/60 Hz		V DC					
208-240 380-415		220-250 -		N P	8,340 8,340	N P	8,340 8,340
Under voltage Release with time delay							
V AC 50/60 Hz		V DC					
208-240 380-415		220-250 -		V W	11,940 11,940	V W	11,940 11,940

* $I_{cw}/500V$ 0.5 s for breaking capacity N

3WT Air Circuit Breakers up to 4000 A

ราคา Accessories

Price List

ข้อมูลของผลิตภัณฑ์และการสั่งซื้อสินค้า

Designation			รุ่นสินค้า	ราคา (บาท)	
For fixed-mounted and withdrawable circuit breakers					
Auxiliary switches					
2 CO			3WT9816-1CE00	10,200	
2 NC and 2 NO			3WT9816-1CD00	12,350	
Auxiliary release	Rated control	Supply voltage			
	AC 50/60 Hz V	DC V			
Shunt release "f" for 1st and 2nd auxiliary release (F1 and F2) and closing solenoid (Y1)	-- 110 ... 127 220 ... 240	24 110 ... 125 220 ... 250	3WT9851-1JB00 3WT9851-1JH00 3WT9851-1JK00	8,340	
Undervoltage release "r" (F3) instantaneous 0 ms, short-delay 200 ms	-- 220 ... 240 380 ... 415	24 220 ... 250 --	3WT9853-1JB00 3WT9853-1JK00 3WT9853-1JM00	8,340	
Undervoltage release "rc" (F8) can be delayed 0.2 ... 3.2 s	220 ... 240 380 ... 415	220 ... 250 --	3WT9854-1JK00 3WT9854-1JM00	11,970	
Motorized operating mechanism					
	AC 50/60 Hz V	DC V			
	-- 110 ... 127 220 ... 240	24 110 ... 125 220 ... 250	3WT9832-1JB00 3WT9832-1JH00 3WT9832-1JK00	44,430	
Motorized operating mechanism and electrical closing					
	AC 50/60 Hz V	DC V			
	110 ... 127 220 ... 240	110 ... 125 220 ... 250	3WT9831-1JH00 3WT9831-1JK00	53,200	
Electrical closing					
	AC 50/60 Hz V	DC V			
	-- 110 ... 127 220 ... 240	24 110 ... 125 220 ... 250	3WT9833-1JB00 3WT9833-1JH00 3WT9833-1JK00	10,450	
Mutual mechanical interlock	An interlock module with a Bowden wire (2 m) for one fixed-mounted circuit breaker for one withdrawable circuit breaker		3WT9866-3JA00 3WT9866-4JA00	39,990	
			3WT9866-8JA00	9,670	
			3WT9866-8JA01 3WT9866-8JA02	12,370 17,000	
			3WT9864-0CA00	30,910	
			3WT9863-1JA00	4,570	
5-digit operating cycles counter	Safety lock (3SB1) instead of the OFF button	Made by CES Normal lock no. SSG 10			
Locking device consisting of safety locks or padlocks to prevent unauthorized closing of the circuit breaker					
Vectorial summation with current transformer in the neutral conductor					
	Rated current I_n	Size	Number of poles		
Current transformers external neutral conductor without copper busbar		I	3-pole and 4-pole	3WL9111-0AA21-0AA0	21,950
		II	3-pole and 4-pole	3WL9111-0AA22-0AA0	25,480
Door sealing frame IP40				3WT9886-0JA00	5,160
ATS Set 800-4000A			Breaker 3WT	2 ตัว	
3WT9831-1JK00			Motorized & Closing	2 ตัว	
3WT9851-1JK00			Shut release	2 ตัว	
3WT9866-1JA00			Mechanical interlocking	2 ตัว	
ราคาอุปกรณ์ 3WT (ไม่รวม CB,ATS)			203,060 บาท		
ชุดประกอบเบรกเกอร์			3WT8000-0UA30-0AC2	Fix type	
ชุดประกอบเบรกเกอร์			3WT8000-0UA30-5AC2	Withdraw	



Siemens Limited

Charn Issara Tower II, 32nd Floor,
2922/320-323 New Petchburi Road,
Bangkapi, Huaykwang
Bangkok 10310, Thailand



Email : electricalproducts.th@siemens.com

Website : www.siemens.co.th

The information provided in this catalog contains merely general descriptions or characteristics of performance which in case of actual use do not always apply as described or which may change as a result of further development of the products. An obligation to provide the respective characteristics shall only exist if expressly agreed in the terms of contract. Availability and technical specifications are subject to change without notice.

All product designations may be trademarks or product names of Siemens AG or supplier companies whose use by third parties for their own purposes could violate the rights of the owners.

สอบถามและสั่งซื้อผลิตภัณฑ์ ติดต่อร้านค้าหรือตัวแทนจำหน่าย