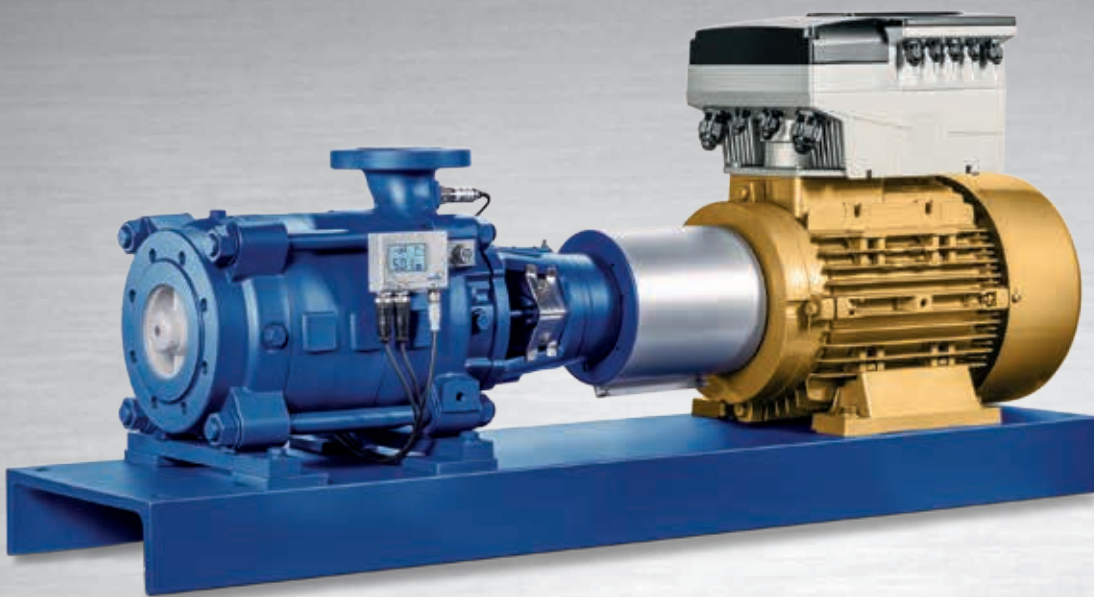


► Our technology. Your success.

Pumps • Valves • Service



Multitec – High-pressure Pump in Ring-section Design



Applications:

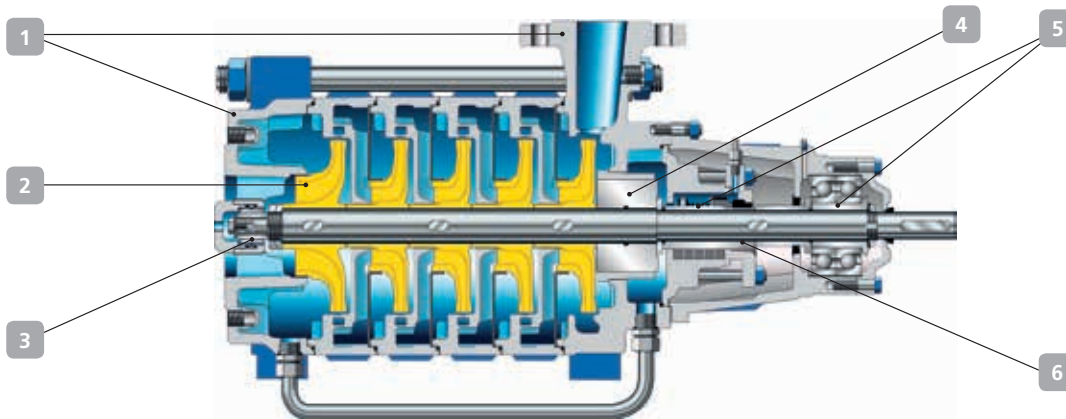
- Water supply
- Drinking water supply
- Pressure boosting
- Irrigation systems
- Fossil-fuelled power stations
- Hot water supply
- Condensate transport
- Boiler feed applications
- Heating systems
- Filtering systems
- Fire-fighting systems
- Snow-making systems
- Washing plants
- Industrial plants
- Desalination plants
- Geothermal plants
- Heat recovery systems

Multitec with KSB SuPremE® IE4* motor, PumpDrive and PumpMeter

More information:

www.ksb.com/products

Multitec – High-pressure Pump in Ring-section Design



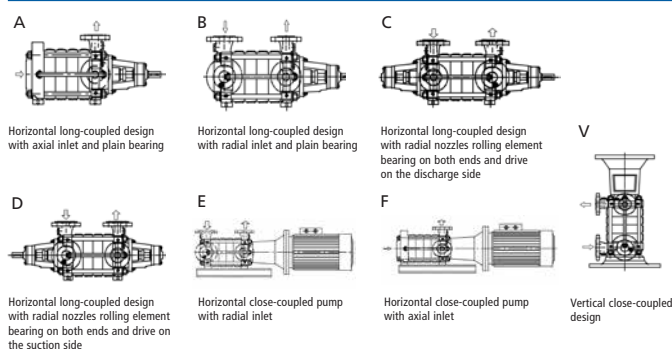
Versatile and flexible pump

- 1 Suction and discharge nozzles can be adjusted to the system as needed, even on site.
 - Large choice of designs, materials and shaft seals to adapt to the customer's project.

High operating reliability

- 2 Special suction impeller designed for good performance and smooth running even under poor suction conditions or for handling fluids with low vapour pressure.
- 3 Wear-resistant, self-aligning plain bearing made of silicon carbide.
- 4 Axial thrust balancing ensured by balancing drum for a long service life.

Designs



| Technical data | Size: DN32-200 | |
|-------------------------|-----------------------------|----------------|
| Flow rate | up to 850 m ³ /h | 3742 Usgpm |
| Discharge head | up to 1000 m | 3280 ft |
| Pump discharge pressure | up to 100 bar | up to 1450 psi |
| Fluid temperature | -10 to + 200 °C | 14 to 392 °F |
| Frequency | 50 and 60 Hz, 2 and 4 poles | |

Low operating costs

- Optimised hydraulic design and impellers trimmed to the duty point as a standard to ensure the system's high efficiency.
- KSB SuPremE® IE4* synchronous reluctance motor, PumpMeter, as well as PumpDrive or PumpDrive R variable speed systems ensure optimal efficiency of the complete pump set and automatic adjustment to current demand, thus important energy savings are achieved.

Service-friendly design, low spare parts costs

- 5 Easy dismantling of bearing and shaft seal without the need to remove hydraulic components thanks to separate seal chamber/bearing housing as well as shaft protecting sleeves at the bearing and shaft seal.
- 6 With some pump models, there is only one discharge-side seal. This reduces the costs for purchasing and storing spare parts.

Other features

| | |
|---------|--------------------------|
| Flanges | DIN or drilled to ASME |
| Drive | direct by electric motor |

Materials

| | |
|---|-----------------|
| Cast iron | Bronze |
| Nodular cast iron (only for DN 200) | Cast steel |
| Duplex and super duplex stainless steel | Stainless steel |

Automation options

PumpDrive, PumpDrive R, KSB SuPremE® IE4* motor, PumpMeter

* IE4 acc. to IEC/CD 60034-30 Ed. 2



KSB Aktiengesellschaft
Johann-Klein-Straße 9
67227 Frankenthal (Germany)
www.ksb.com